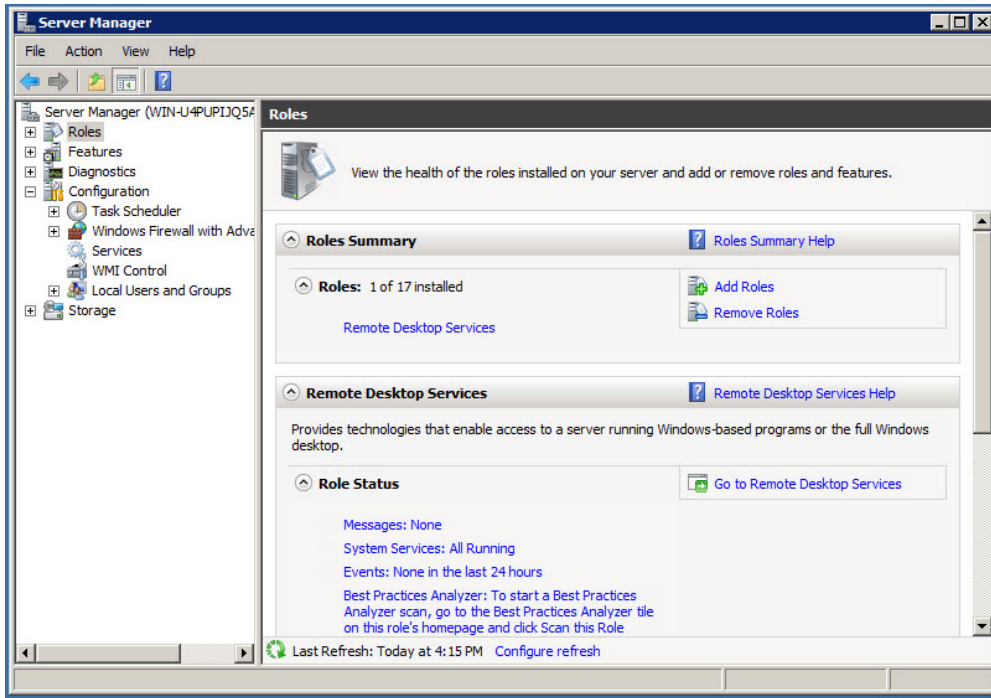


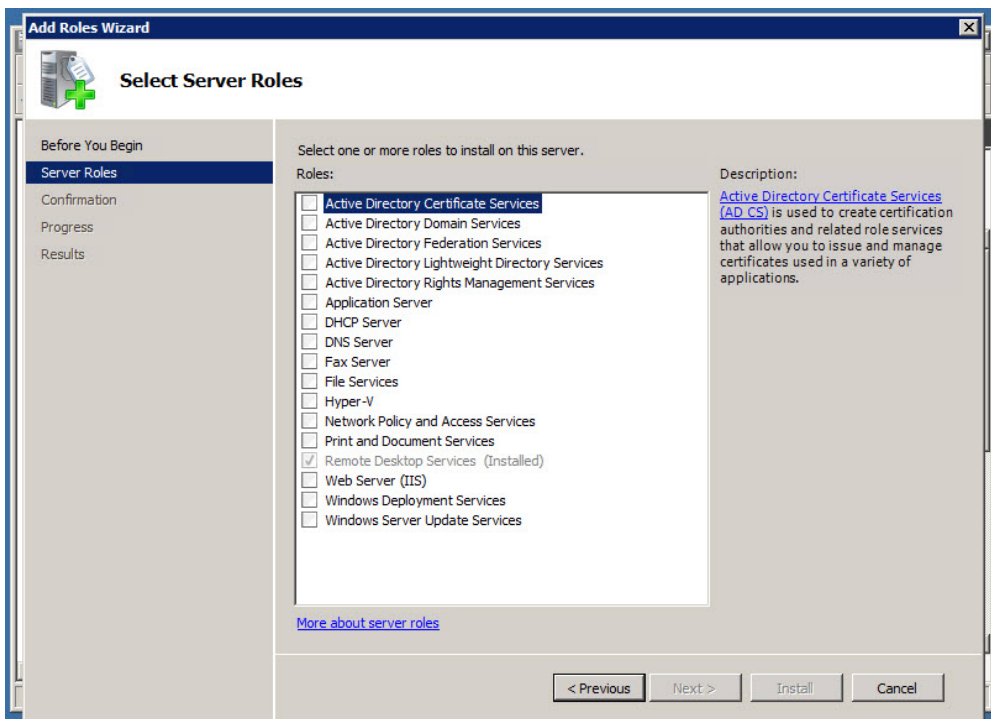
Windows Server 2008 R2 32-bit Color Settings

This article will detail the settings and services required to enable 32-bit color on a Windows Server 2008 R2 machine using Terminal Services and Remote Desktop Connection. This article is specifically written to assist with the color issue found in the SRP Ribbon Control. This article is based on a fresh install of Windows Server 2008 R2, so modify settings according to your environment.

1. Install and Configure Remote Desktop Services.
 - a. To do this, go to Server Manager - Roles



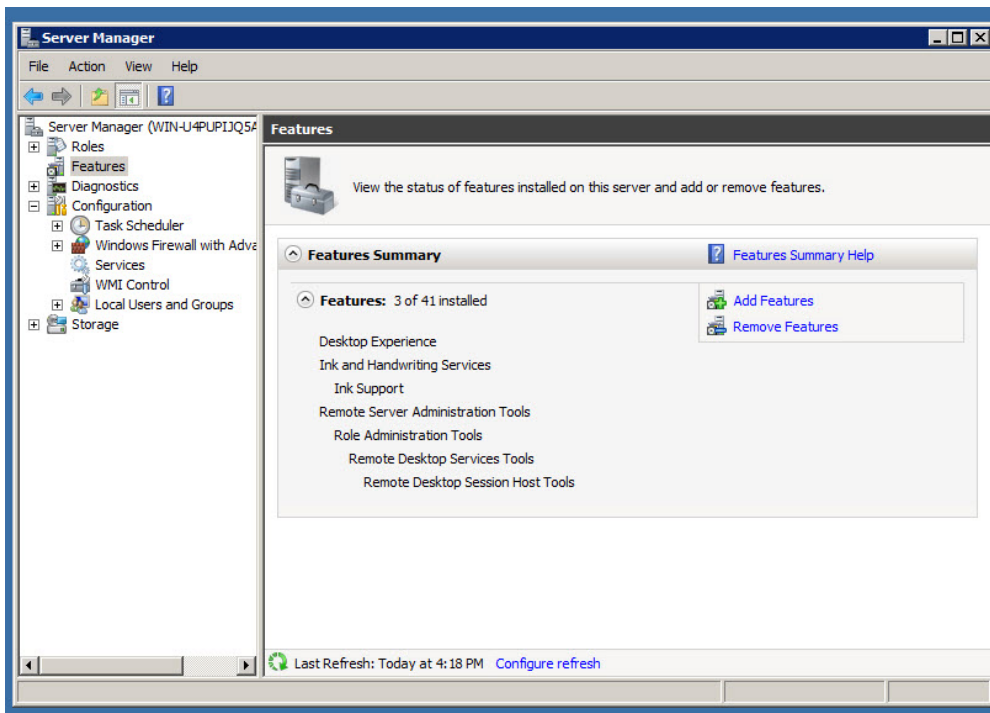
- b. Choose "Add Roles" and configure the Remote Desktop Services.



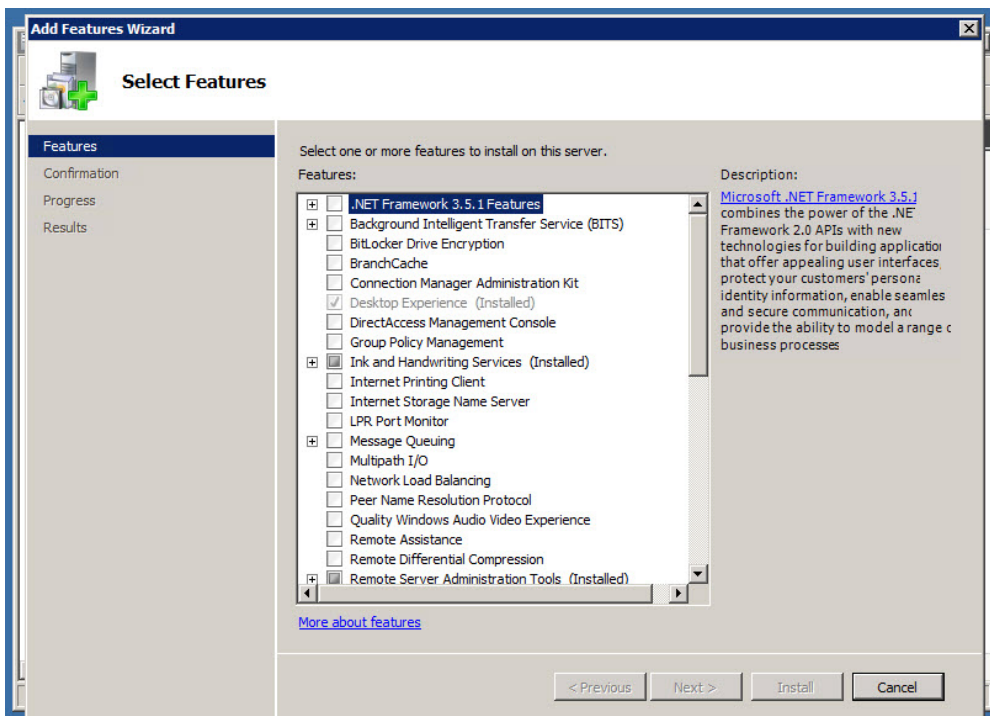
- c. This will require your server to be restarted.

2. Next you will need to enable the "Desktop Experience" feature.

a. Go under Server Manager - Features



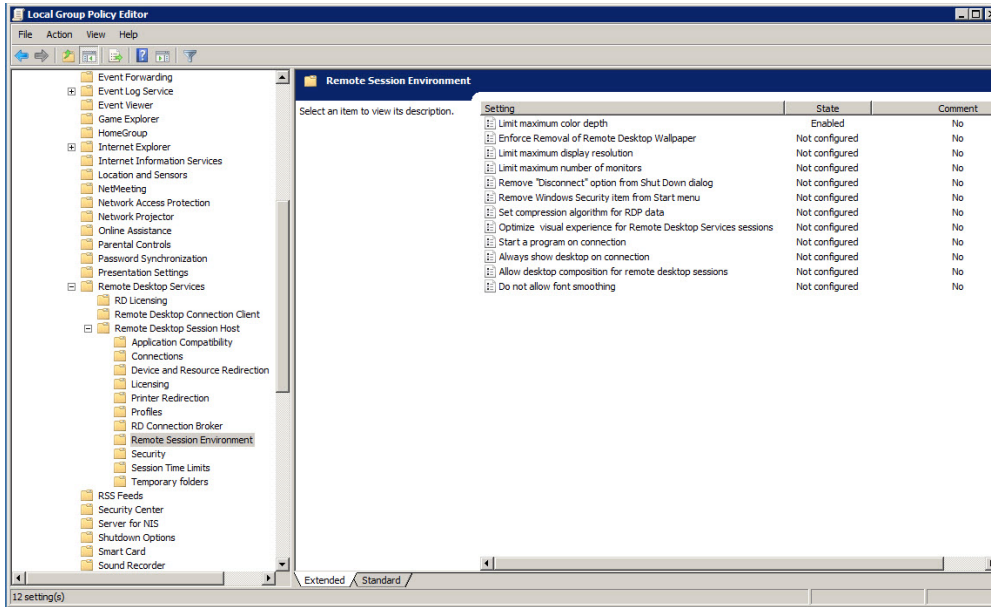
b. Add the Desktop Experience feature. When choosing this feature, Windows will automatically request for additional features to be enabled. Accept those additional features.



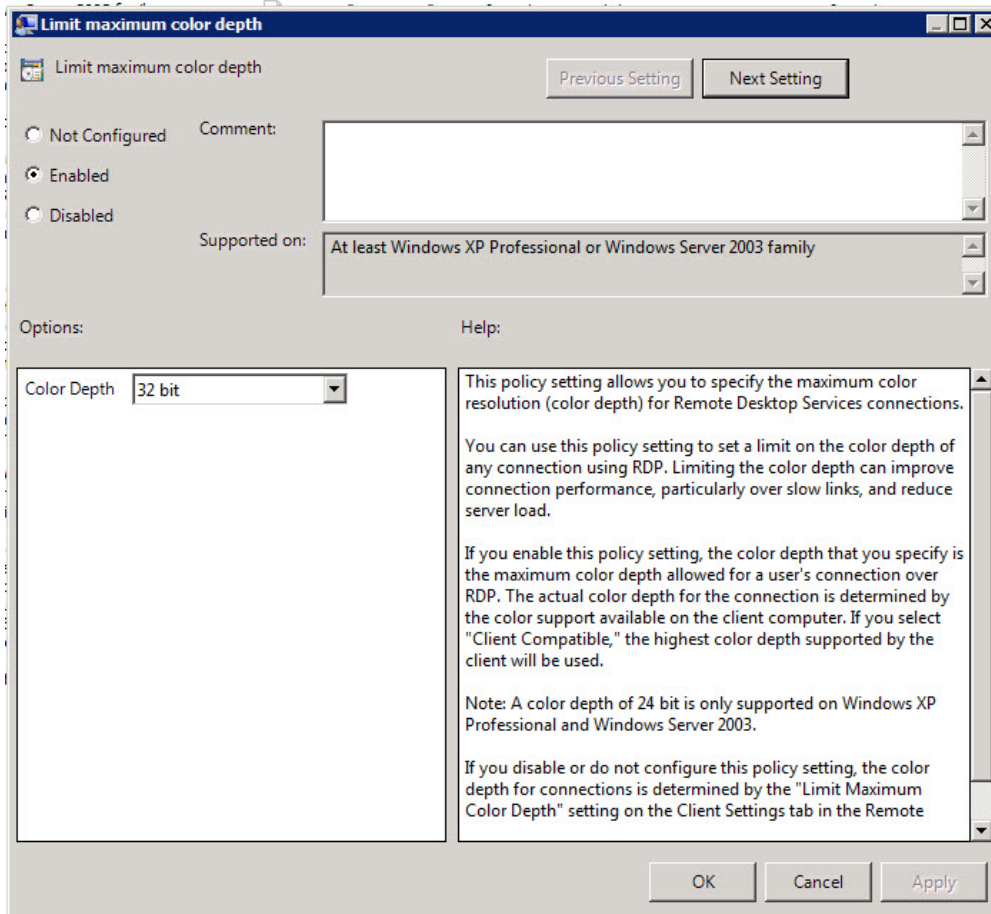
c. Enabling this feature will most likely require you to restart your server again.

3. Lastly, we need to modify the group policy to require 32-bit color.

a. Open up Local Group Policy Editor and navigate to \Windows Components\Remote Desktop Services\Remote Desktop Session Host\Remote Session Environment.



b. Edit Limit maximum color depth and modify the Color Depth setting to "32 bit" and hit OK.



c. Restart your server to apply the color setting.

4. Your color settings will still be locked down, but you should now notice improved desktop resolutions and the removal of jagged drop shadows.



